

BOURDON TUBE PRESSURE GAUGE IN CHEMICAL VERSION ACC. TO DIN EN 837-1



Diameter 40, 50
Connection position bottom
or centric back

with or without glycerine filling

They are suitable for all liquid and gaseous aggressive fluids, as far as these are not highly viscous, do not crystallize and do not attack stainless steel 1.4571. They are particularly suitable when the housing sealing and chemical resistance is important.



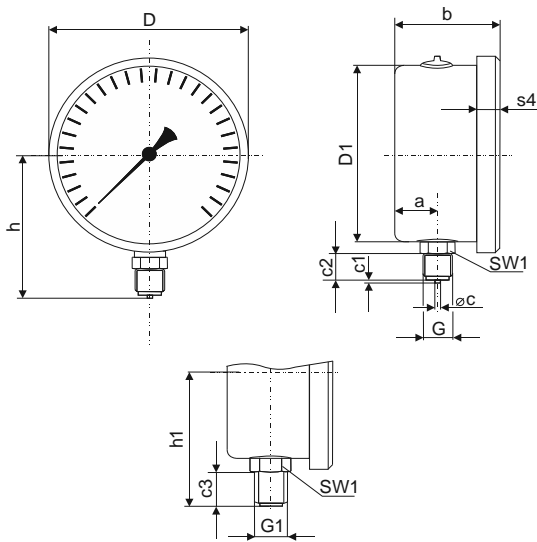
Type	6010	6011	6020	6021	Options
Diameter	40		50		
Symbol					
Accuracy class	cl. 1,6 acc. to DIN EN 837-1, cl. 2,5 at 0...600 bar				
Ranges	0...1 bar up to 0...600 bar according to DIN EN 837-1 negative or positive overpressure				
Application	Constant load: 3/4 x end of scale value Alternating load: 2/3 x end of scale value Short time: end of full scale				
Case	CrNi-steel (1.4301)				
Ring	Crimped-on ring CrNi-steel (1.4301)				Slip-ring
Window	single strength glass lens				
Dial	Al white, scale and printing black				Dual scale bar/psi
Movement	CrNi-steel				
Pointer	Al black				
Pressure connection	G 1/8 B or 1/8" NPT		G 1/4 B		M12x1,5
Connection position	radial bottom	centric back	radial bottom	centric back	with orifice
Ambient temperature	unfilled (dry): -40...+60°C with glycerine filling: -20...+60°C				
Medium temperature	unfilled max.: 200°C, with glycerine filling max.: +100°C				
Protection	IP54 unfilled / IP65 filled				
Approx. weight unfilled	0,08 kg	0,08 kg	0,08 kg	0,09 kg	

Dimensioned drawing ND 50

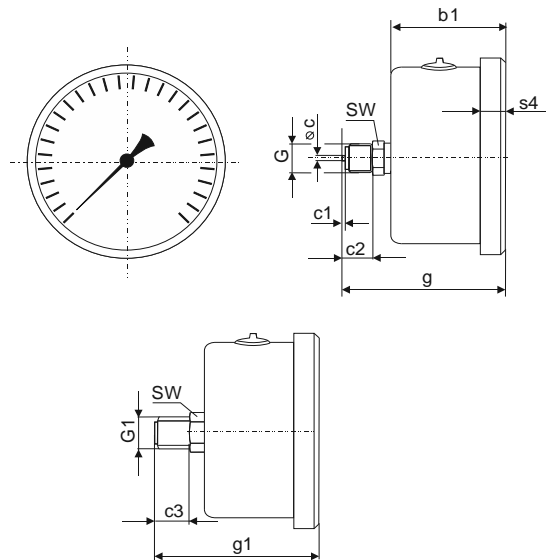
Dimensions (mm) and weight (kg)

NG	a	b	b1	c	c2	c3	D	D1	D2	d1	d2	d3	G	G1	g	g1	h	h1
40	10,3	29,5	31,5	4	10	10	44,5	39,5	41,5	51	61	3,6	G 1/8 B M10x1	1/8" NPT	48	48	35	35
													s1	s3	s4	SW	SW1	Weight*
													0,8	7,5	6,5	14	10	0,08 kg

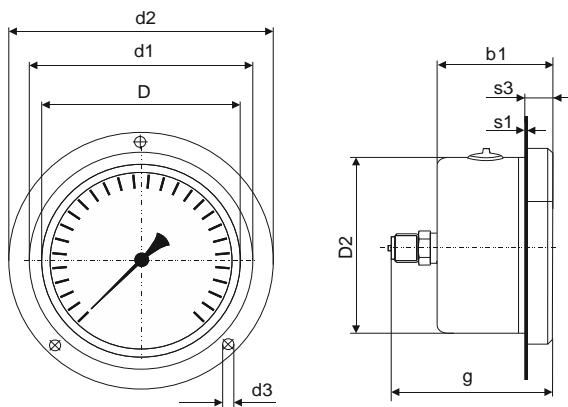
ND 40
Connection bottom



ND 40
Connection centric back

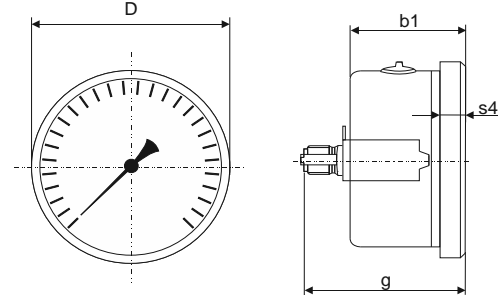


ND 40
Connection centric back,
front flange for panel mounting



recommend panel cut out $\varnothing 42,5 \pm 0,3$ mm

ND 40
Connection centric back
U-clamp for panel mounting



recommend panel cut out $\varnothing 41 \pm 0,3$ mm

*without filling

Dimensioned drawing ND 50

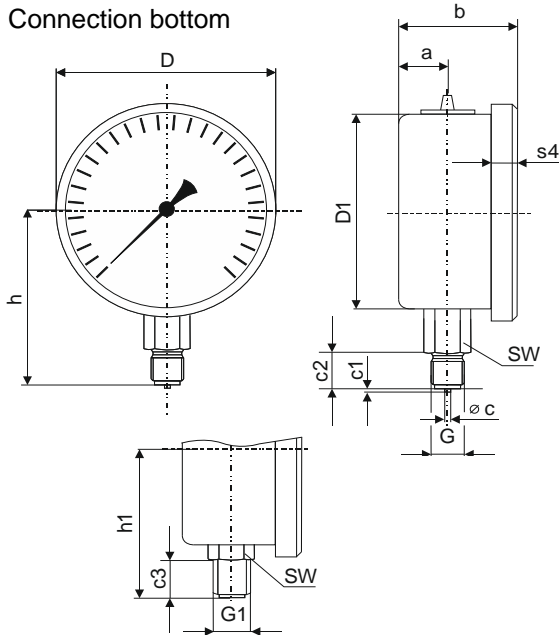


Dimensions (mm) and weight (kg)

a	b	b1	c	c1	c2	c3	D	D1	D2	d1	d2	d3	G	G1	g	g1	h	h1
10	29	31	5	2	13	13	54	48,5	51	60	71	3,6	G1/4B M 12x1,5	1/4"NPT	50	50	45	45
													h1	s1	s3	s4	SW	Weight*
													34,5	0,8	3,5	3,5	14	0,09 kg

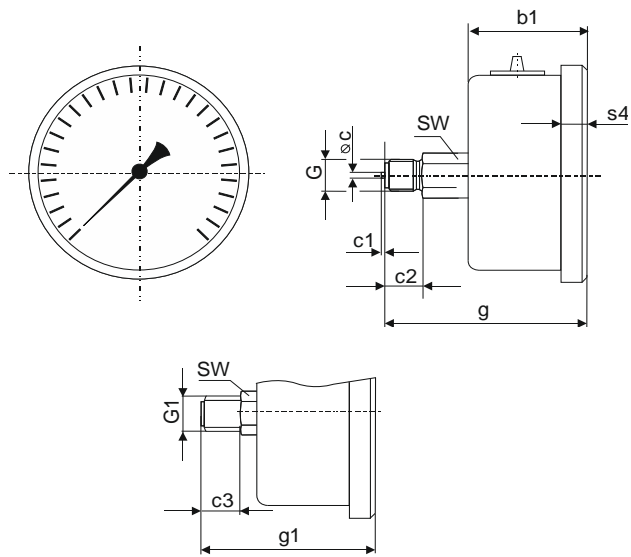
ND 50

Connection bottom



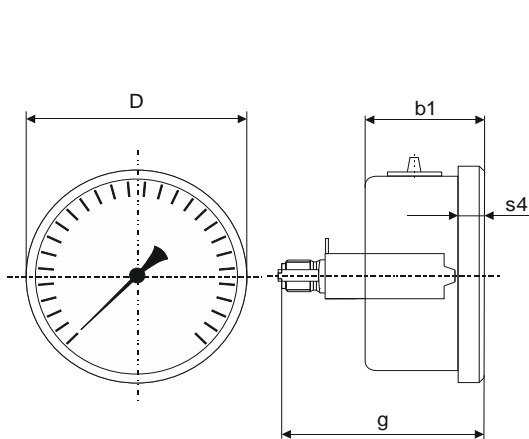
ND 50

Connection centric back



ND 50

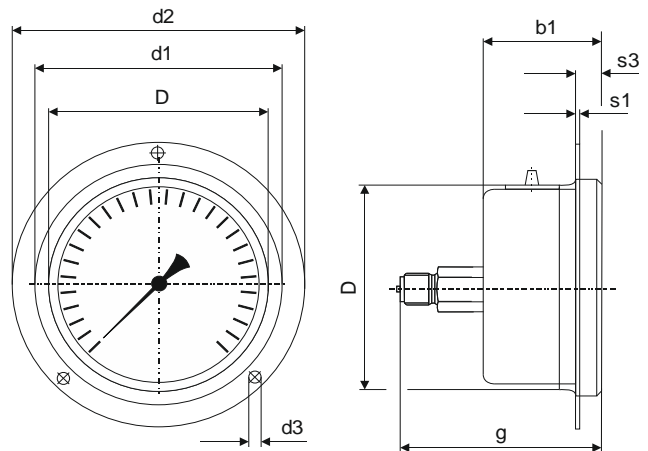
Connection centric back,
U-clamp for panel mounting



recommend panel cut out $\varnothing 51 \pm 0,3$ mm

ND 50

Connection centric back
front flange for panel mounting



recommend panel cut out $\varnothing 54 \pm 0,3$ mm